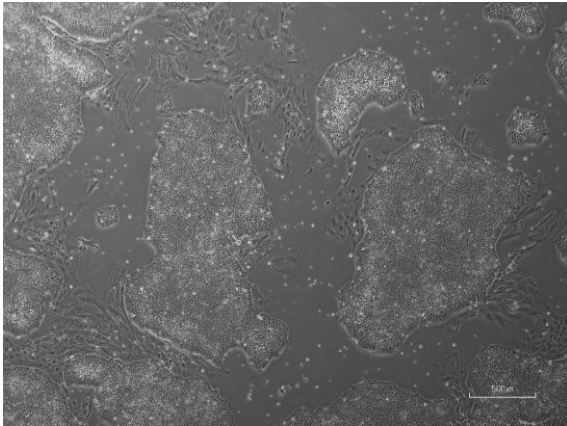
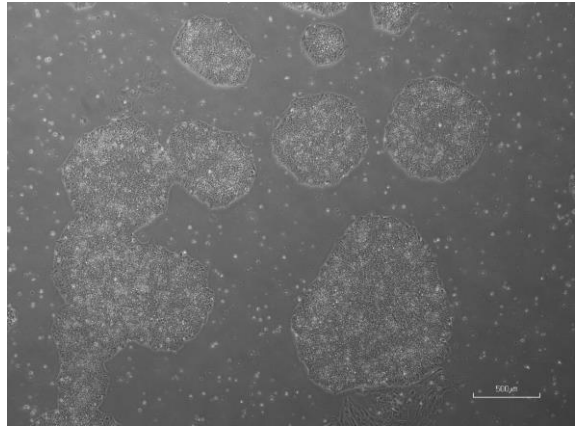


【 CiRA-jk-0052 】 Morphology of iPSC colonies

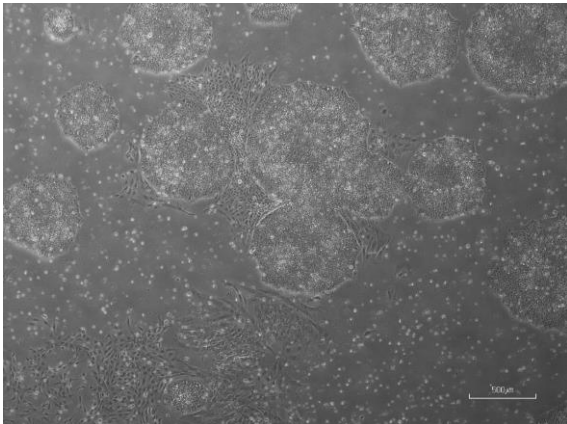
CiRA -jk-0052-A: passage-2



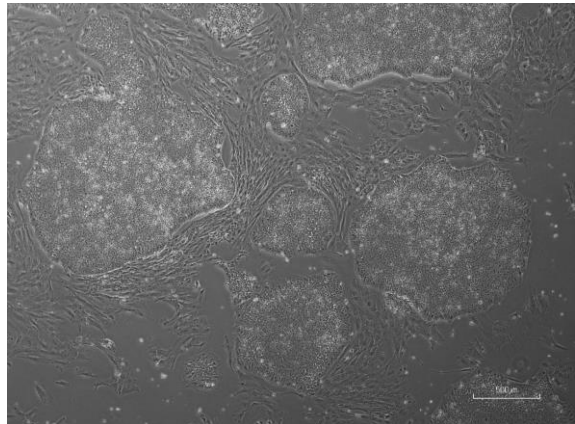
CiRA -jk-0052-B: passage-2



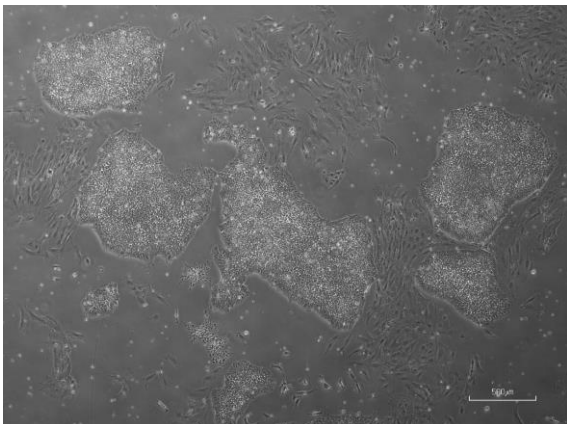
CiRA -jk-0052-C: passage-2



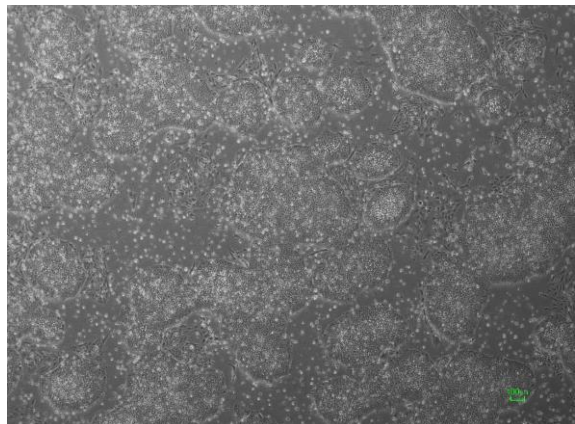
CiRA -jk-0052-D: passage-2



CiRA -jk-0052-E: passage-2



CiRA -jk-0052-F: passage-3



(All images were captured at 4x magnification)